

Fixing Instructions

Note: Before bending poles, read point 1 carefully

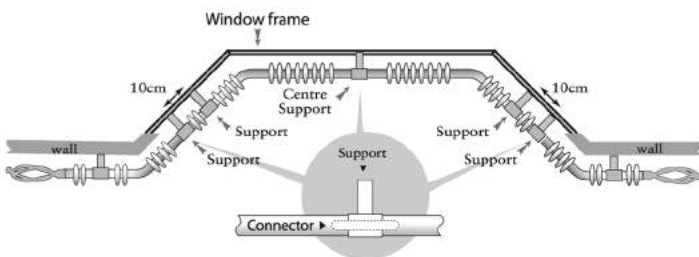
We recommend 2 persons undertake the fixing of this pole.

When fitting with a bay pole, please open and read both sets of fixing instructions before installation

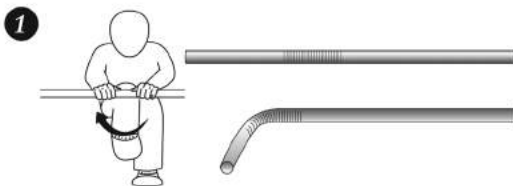
Please read all instructions carefully before installation.



How the Completed Pole should look



All poles should be cut to hide the joints behind the relevant supports as shown.

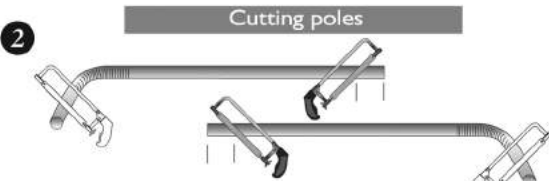


Gently bend the poles to the desired shape.

ENSURE THE CUTS IN THE POLE ARE TO THE INSIDE OF THE BEND.

Please Note: Bending the product the wrong way will cause irreparable damage.

Practical Tip: Use your knee to ease the bending process and generate a smooth bend being careful to avoid injury or damaging your clothes.

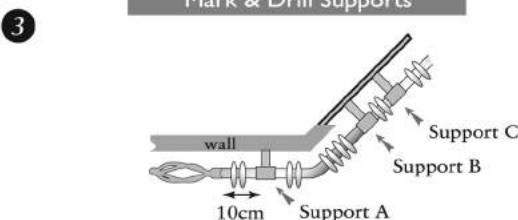


Cut an equal amount off both poles.

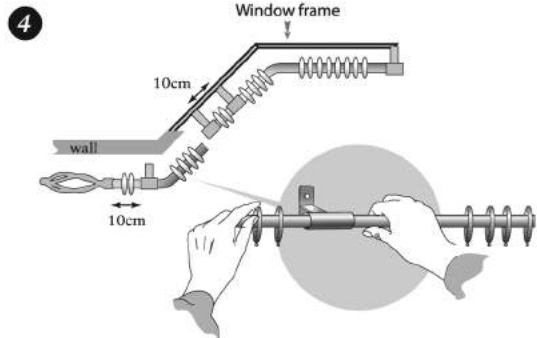
Remember to leave 10cms beyond the last support.

Note: You may need to cut both ends of both poles.

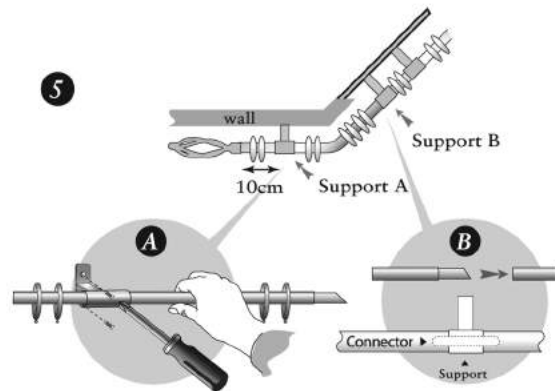
Mark & Drill Supports



Mark and drill the positions, (using a 6mm drill bit), for Support A. Support B (only supplied with 19mm Bay Pole kit) should be positioned to cover the joint between the Bay Pole and the Return Kit.



Slide 1 ring for every 10 cms of pole and 1 support onto one of the return kit poles as diagram above shows ensuring 1 or 2 rings are allocated for the space between the end support and the finial. Allow the supports to hang loosely from the pole at this stage.



Insert the joining connector and push the poles firmly together before securely fastening the support to the wall using the pre-drilled holes. Repeat on the other side.



Tighten the grub screws in the supports to hold the pole in place and fix the finials, ensuring 1 or 2 rings are between each end support and finial, these will act as end stops.

Please Note: Component parts may vary in style.